



Discussion and Consideration of FY 2019-21 Strategic Investments

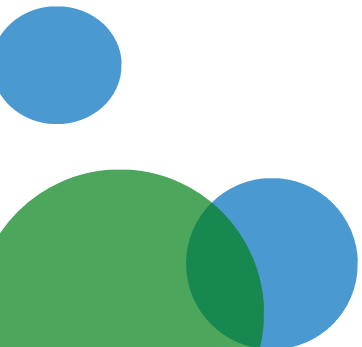
January 24, 2019



Neighborhoods for Learning (NfL) Transition Updates

Communication Activities

- Customizable parent hand-out
- Weekly funded partner e-newsletter
- Monthly “coffee and conversations”
- Parent meetings
- Website updates
- Meetings with funded partner staff and Interface



NfL Site Selection




- Completion of Facilities Assessment
- Development of Guiding Principles
 - Keep as many current NfL sites as possible to assure families can continue to access PACT and family support services in trusted, familiar locations.
 - Leases should be low-cost/affordable.
 - Apply NfL allocation formula



Next steps: facility negotiations and securing leases

NfL Staffing



- Job opportunities
 - NfL Director and Project Liaison posted in December
 - NfL Regional Managers posted January 25th
 - NfL PACT and Family Support staff - expected mid-February
 - Interface Open House and Recruitment Fair 2/15/19
 - Job Interviews starting March 1st
 - Job Offers expected beginning April 1st
 - Additional job opportunities will be posted beginning in May
- 



Preschool Implementation Models

Current F5VC Preschool Investments



- FY2018-2019: **557** spaces funded by F5VC:
 - 1) Preschool Expansion contracts (185 spaces)
 - F5VC funds full cost of spaces
 - 2) Through NfL contracts
 - F5VC funds full or partial cost of spaces
 - 268 spaces in NfL classrooms
 - 104 scholarships
- Current target population: Families that do not qualify for CSPP

GOAL: 3 and 4 year olds have access to high-quality preschool

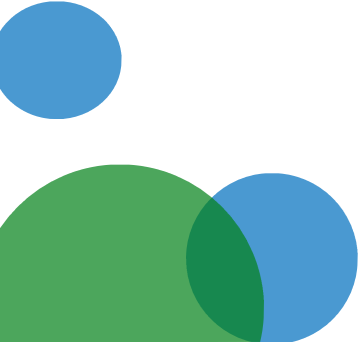
OUTCOME: Children Enter School Ready to Learn

Future F5VC Preschool Investments



- \$1 million/year for FY 2019-21
- Approximately 197 spaces at California State Preschool Program (CSPP) rate of \$5,232 per space

New Opportunities:

- Increased family income and age eligibility for CSPP
 - Additional CSPP funding available
 - Public policy priority
- 

Potential Implementation Models

Current Models

Model A

- Part day preschool spaces/classrooms

Model B

- Scholarships – parent-choice model

New Models

Model C

- Extend part day CSPP spaces
- Add 3 hours

Model D

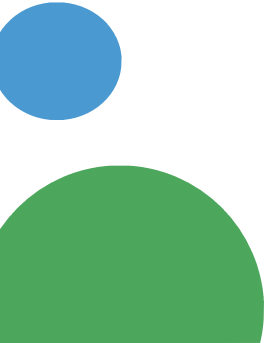
- Part day preschool spaces/classrooms with enhanced wrap around family services
- Add Parents as Teachers

Model E

- Combination of Models A, B, or C

Stakeholder Input Gathering



- Preschool Planning Workgroup:
 - 12 attendees representing state preschool contractors, Head Start contractor, VCOE, NfL leadership, Human Service Agency.
 - Individual meeting with leadership from Oxnard Unified School District and VCOE
 - Takeaway:
 - Reduction of funds will impact families and communities, regardless of model.
 - No clear “winner” - each model has costs/challenges/risks.
- 

California Context



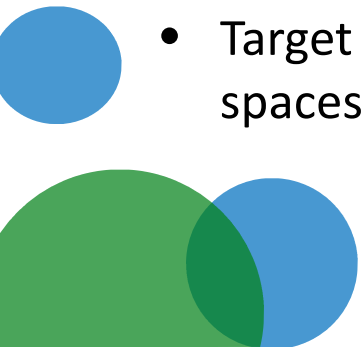
- Governor Newsom's Budget proposal released on 1/10/19 after the Stakeholder Workgroup meetings
 - \$1.8 billion investment in early childhood
 - \$125 million specifically allocated to increase access to preschool for low-income four-year olds
 - Phased in over three years
 - Allocation of funds for preschool facilities and professional development
- Continued commitment to universal preschool as a state policy priority

Recommended Implementation Model



F5VC Priorities

- Position Ventura County for increased public preschool investments
 - Maintenance of licensed capacity*
 - Support facility/capacity building activities*
- Minimize disruption for families, providers, and community
 - Continuity of care*
- Target children not eligible for and/or unable to access publicly funded preschool spaces



Recommended Implementation Model

Next Steps

- Assessment of F5VC Preschool Partners:
 - Opportunity for additional conversion to CSPP funding
 - Impact of F5VC funding on ability to maintain licensed capacity
- Fiscal analysis and cost modeling:
 - Blended funding for classrooms and scholarships
 - Cap on F5VC funding per space (e.g. up to 75% of cost)
- Recommendation at February Commission
 - May include use of unspent preschool funds
 - Proposed criteria for continued funding



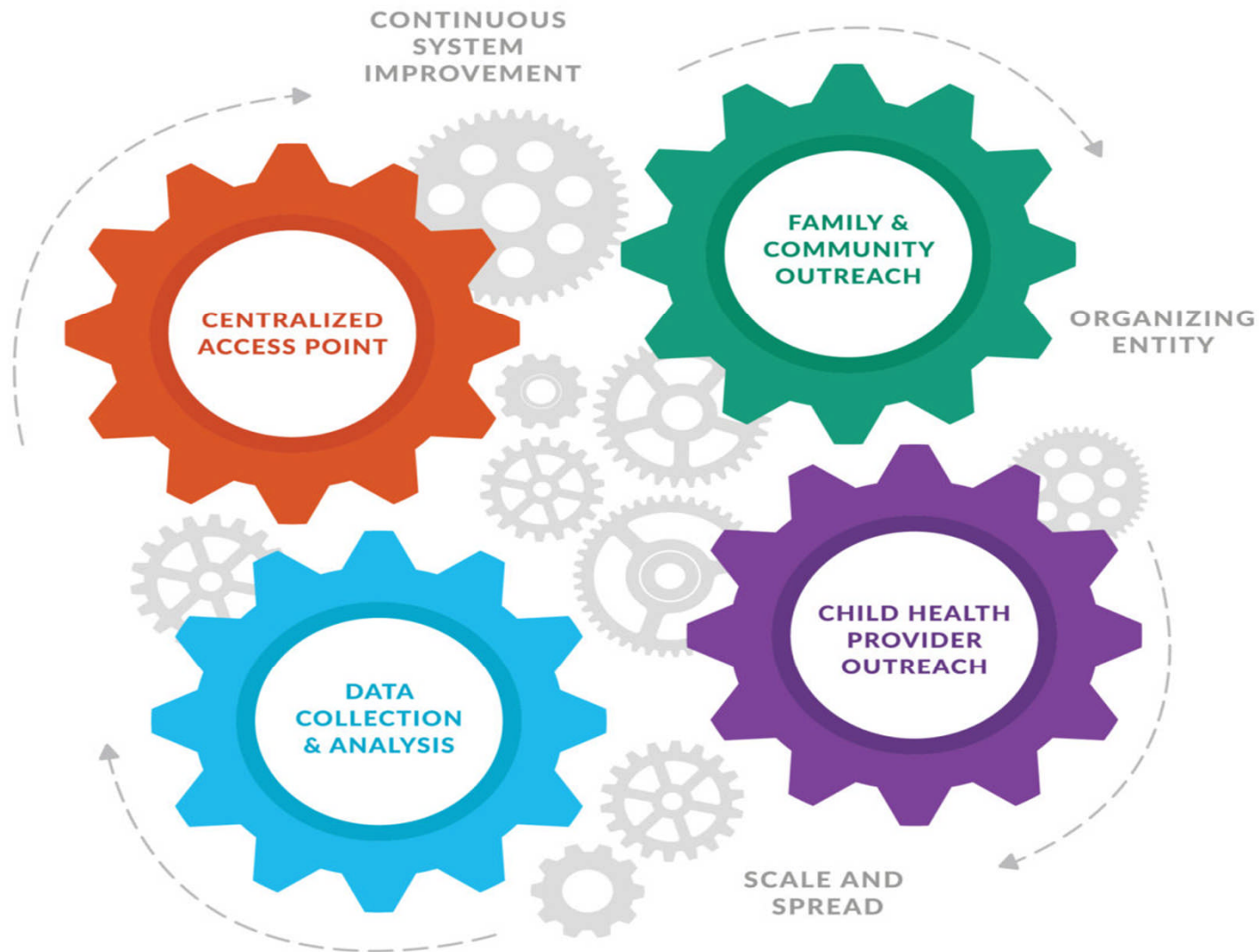
Help Me Grow

Early Identification and Linkage to Services
Implementation Model

Help Me Grow Is...

A comprehensive **system** that promotes universal early identification and linkage to intervention, and ensures all children reach their greatest potential.

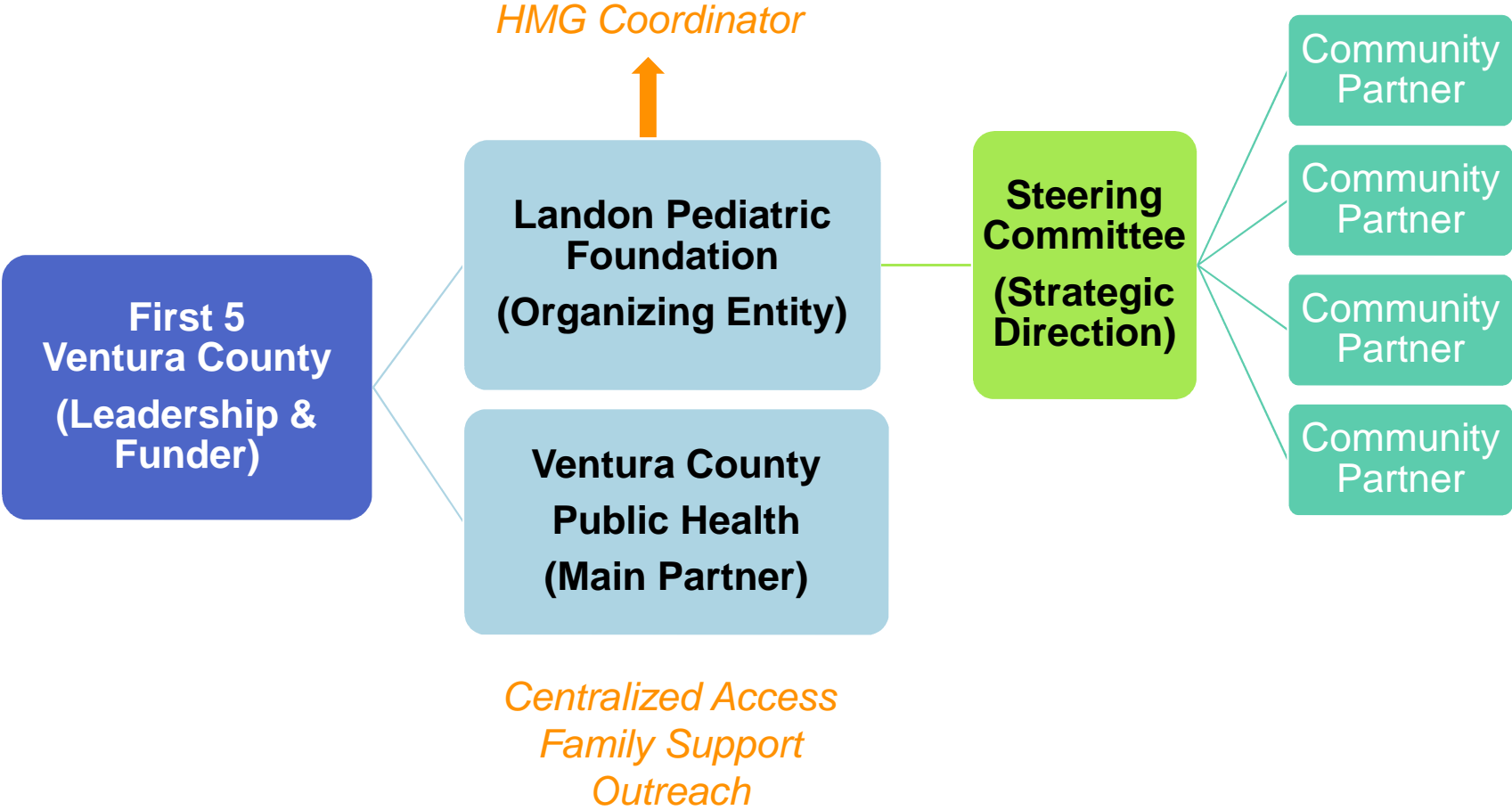




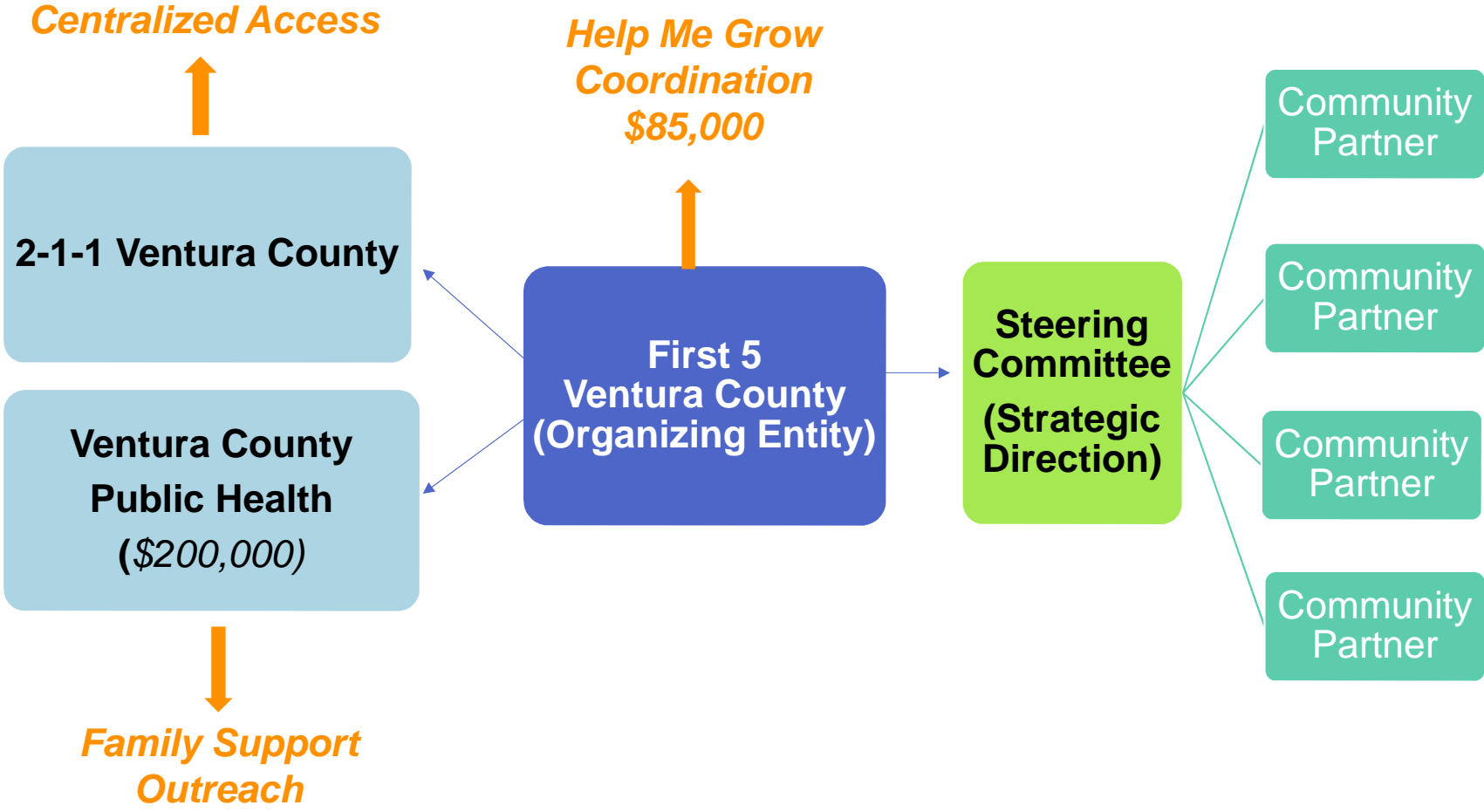
History



Current Implementation Model: \$693,000



Recommended Implementation Model: \$285,000



Recommended Implementation Model

Next Steps

- Obtain additional partner input
- Solidify partner scope of work
- Funding recommendation at February Commission

