



HELP ME GROW VENTURA COUNTY

*Cindy A. Reed
Program Coordinator*



Help Me Grow - a few facts



- 26 states follow the Help Me Grow model
- 13 counties in California
- Ventura County gained affiliation status in 2013
- Help Me Grow Ventura County's Mission:

“Strengthen systems that connect families to early identification and intervention services to ensure their child’s optimal development.”



Developmental Screening Tool Kit

Why?

Support the RTT/QRIS implementation which involves ASQ-3. Ensure:

- Staff are knowledgeable
- Screenings are handled consistently
- Parents are involved
- Best practices timelines are followed

How?

- Create a work group of knowledgeable staff across sectors
- Collaboration and compromise



Developmental Screening Tool Kit

Distribution

Since July 2015, over 2000 Tool Kits and 4000 parent handouts have been distributed to Early Childhood Educators, primarily QRIS implementers.

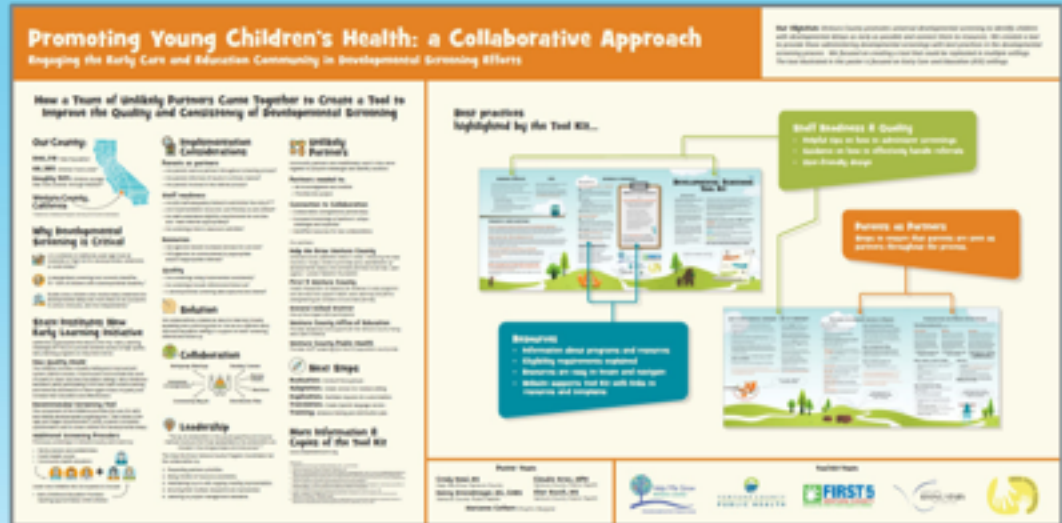
Replication Requests

- *San Joaquin County, CA - in print*
- *Solano County, CA - in discussion*



Poster

- Open call for posters
- Poster creation process - realization of accomplishment



Poster title / theme:

“Promoting Young Children’s Health: a Collaborative Approach”

How a team of unlikely partners came together to create a tool to improve quality and consistency of developmental screening

Poster

National Conference Poster Session

Poster accepted for Association of Maternal & Child Health Programs National Conference (AMCHP) Conference held in Washington, DC in April, 2016. The AMCHP is attended by over 800 Public Health officials interested in maternal and child health.

Poster Session Outcomes

- Approached by Brookes Publishing, creator of ASQ-3 and ASQ-SE2, to participate in focus group.
- Admiration was expressed at our ability to collaborate with the Office of Education and the local school districts.
- In discussions with Hawaii Public Health Department
- Presenting at Zero to Three Institute National Conference - December 2016



A Look Ahead – FY16–FY19

- Early Identification Guide
- Super PIP
- Parents as Partners
- Parents as Learners
 - *Social Media Campaign*
- Build Capacity for Screening
- Centralized Phone Access Line
- Data Collection

Early Identification Guide (EIG)

- EIG is similar to the DSTK but designed specifically for medical providers.
- Provides best practices, tips for selecting evidenced-based screening tool, sample office workflow, billing information, and resources and referral information.
- Partnering with VCPH-CHP Health Educators to distribute EIG.
- Accessible on Help Me Grow Ventura County website. Electronic copy and supplemental materials available at www.helpmegrowvc.org

