



**Local Planning Council**  
of Ventura County  
*The United Voice for Early Care and Education*

"Commitment to Quality Education"

---

---

---

---

---

---

---

---

**Local Planning Council**

**Vision and Mission**  
The Local Planning Council (LPC) is the united voice for early care and education in Ventura County and actively plans for access to quality child care based upon the needs of children and families.




---

---

---

---

---


---

---

---

**State Mandates**

- Needs Assessment
- Strategic Plan
- Priorities of State Funding
- Voluntary Temporary Transfer of Funds (VTTF)
- Fostering Local Partnerships between Early Care and Education stakeholders




---

---

---

---

---

---

---

---

# QUALITY EARLY CHILDHOOD DEVELOPMENT PRODUCES LONG-TERM BENEFITS

- Cognitive Skills
- Social-Emotional Skills
- Earnings
- Inequality

James Heckman and Paul Gertler et al.  
*Labor Market Returns to an Early Childhood Stimulation Intervention in Jamaica*

LEARN MORE AT [HECKMANEQUATION.ORG](http://HECKMANEQUATION.ORG)

---

---

---

---

---

---

---

---

---

---

---

---

## Local Planning Council of Ventura County



Local Planning Council  
*The United Way for Early Care and Education*

---

---

---

---

---

---

---

---

---

---

---

---

## Population

846,178 Ventura County residents  
 • 5.8 % under 5  
 • 12.3 % between 5-14

Source: U.S. Census Bureau, American Community Survey, 2014



City	2010	2014*
Camarillo	63,201	66,922
Fillmore	13,092	13,423
Moorpark	34,421	35,334
Ojai	7,461	7,627
Osland	197,899	205,437
Port Huernene	21,224	23,129
Santa Paula	29,521	30,441
Santa Valleys	124,257	126,871
Thousand Oaks	126,683	129,342
Ventura	106,433	109,484
Unincorporated County	83,927	86,344
<b>TOTALS:</b>	<b>823,388</b>	<b>846,178</b>

City	Population of Children Ages 0-14			
	Under 5	Ages 5-9	Ages 10-14	Ages 0-14
Camarillo	3,094	4,061	4,831	12,021
Fillmore	1,530	1,609	1,204	4,412
Moorpark	2,117	2,429	2,013	7,462
Ojai	323	341	453	1,313
Osland	17,463	15,969	14,369	47,809
Port Huernene	1,413	1,482	1,393	4,401
Santa Paula	2,612	2,464	2,642	7,719
Santa Valleys	7,488	8,237	8,986	24,711
Thousand Oaks	5,311	9,170	9,173	24,074
Ventura	6,287	6,134	6,668	19,087
<b>Total</b>	<b>49,404</b>	<b>52,168</b>	<b>52,529</b>	<b>153,901</b>

Sources: U.S. Census Bureau, 2010; \*U.S. Census Bureau, American Community Survey, 2014

---

---

---

---

---

---

---

---

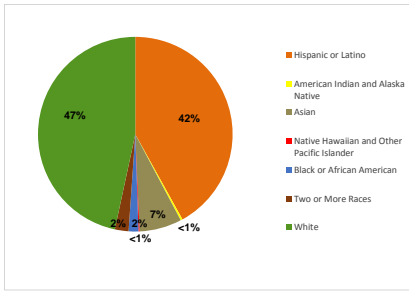
---

---

---

---

## Ventura County Ethnicity



Source: U.S. Census Bureau, American Fact Finder, 2015

---

---

---

---

---

---

---

---

---

---

## Economic Trends

	Median Earnings Per Household*	Unemployment Rate	Below Poverty Level
Camarillo	\$89,641	4.4%	6.5%
Fillmore	\$55,776	8.7%	N/A
Moorpark	\$97,815	5.8%	7.1%
Ojai	\$60,157	7.2%	N/A
Oxnard	\$60,693	8.6%	16.5%
Port Hueneme	\$53,284	7.3%	20.9%
Santa Paula	\$54,068	10.5%	16.7%
Simi Valley	\$84,673	5.1%	6.7%
Thousand Oaks	\$101,417	4.8%	6.7%
Ventura	\$67,514	5.6%	10.3%

94,610 live in poverty; 11,776 children 0-5 live in poverty\*\*

Source: County of Ventura Human Services Agency 2013-2014 Annual Report; \*City-Data.com; \*\*California Child Care Resource & Referral Network

---

---

---

---

---

---

---

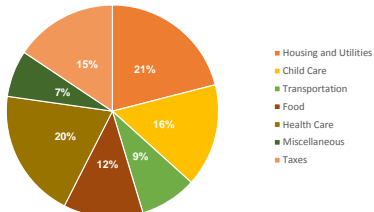
---

---

---

## Cost of Living

Monthly Cost of Living Two Working-Parent Family of 4



A family of four in Ventura County with two children and two working adults needs an annual income of \$85,713 or \$7,143 per month for a modest standard of living  
A single parent family with two children in Ventura County needs an annual income of \$79,549 or \$6,629 per month for a modest standard of living

Source: California Budget Project, Making Ends Meet; 2013

---

---

---

---

---

---

---

---

---

---

## Child Care Cost

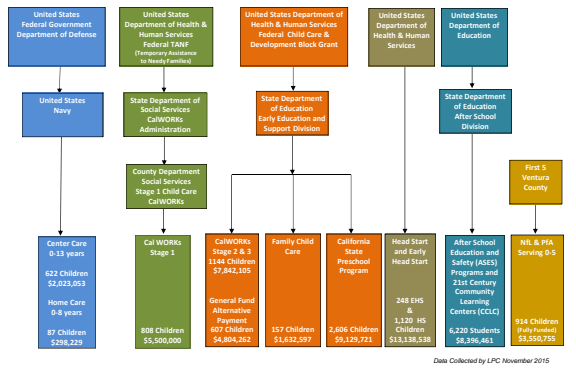
### Average cost of child care

Type of Facility	Ventura County	California	National Average
<b>Child Care Center</b>			
Full-time Infant	\$14,544	\$13,327	\$4,822-\$17,062
Full-time Preschool	\$10,348	\$9,106	\$3,997-\$12,781
<b>Family Child Care Home</b>			
Full-time Infant	\$9,344	\$8,462	\$3,972-\$10,666
Full-time Preschool	\$8,799	\$7,850	\$3,675-\$10,030

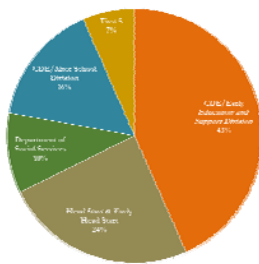
As a basis of comparison, California (in-state) annual tuition and fees for public four-year college: \$9,172\*

Sources: California Child Care Resource & Referral Network 2015; \*Child Care Aware of America, 2015

## Subsidized Child Care Spaces in Ventura County



## Subsidized Child Care Spaces in Ventura County



\$23.4M California Department of Education/Early Education and Support Division  
4,514 Children

\$13.1M Head Start and Early Head Start  
1,120 Head Start Children and 248 Early Head Start Children

\$5.5M Department of Social Services  
808 Children

\$8.4M California Department of Education/After School Division  
6,220 Children

\$3.5M First 5  
914 Children

**\$54M Total Subsidized Funding**  
**13,824 Children Served**

## Child Care Supply

30,325 total child care center and family child care spaces in August 2015

- 23,803 child care center spaces
- 6,522 family child care spaces

1,874 family child care spaces lost between 2010 and 2015

Source: County Resource and Referral unit housed at CDR



---

---

---

---

---

---

---

---

## Child Care Demand

### Unmet Need for Preschool Services in California

- Ventura, Sacramento, Orange and Tulare – have the highest number and percentage of unserved children
- Ventura identified as a high priority county for new spaces

Source: American Institutes for Research, March 2016

### Demand for 0-5 year old subsidized spaces

- 11,776 children in poverty
- 4,997 subsidized spaces available
- 6,779 gap
- 58% of children 0-5 living in poverty are not served

Sources: Child Development Resources, Inc., California Child Care Resource & Referral Network

---

---

---

---

---

---

---

---

## Rising Stars Quality Rating and Improvement System (QRIS)



---

---

---

---

---

---

---

---

## Rising Stars Quality Rating and Improvement System




---

---

---

---

---

---

---

---

## Rising Stars QRIS Participation

# Districts	
1. Conejo Valley Unified	7. Pleasant Valley Elementary
2. Fillmore	8. Rio School District
3. Hueneme Elementary SD	9. Santa Paula Unified School District
4. Moorpark Unified	10. Simi Valley Unified
5. Ocean View School District	11. Ventura Unified School District
6. Oxnard Elementary	

# Sites	# Teachers	# Children
126	459	4400

---

---

---

---

---

---

---

---

## Rising Stars QRIS Ratings

- Rated and Accredited Sites**
- 98% of subsidized sites participate in Rising Stars
  - 95% of these sites were rated high; 3-5 stars
  - 20 sites are NAEYC accredited
  - 4 sites are NAFCC accredited




---

---

---

---

---

---

---

---

### Key Trends

- 18% of children 0-5 live in poverty
- Over half of 0-5 year-olds in poverty do not have access to subsidized care
- Ventura identified as one of four counties with the highest number and percentage of unserved children.



---

---

---

---

---

---

---

---



---

---

---

---

---

---

---

---